

PRAMOD JAINS HIMANSHU wings

Near Railway Crossing, Kolar Road, Mandideep

Amenities

- 24x7 security.
- Landscaped gardens & open spaces.
- 70% Open space.
- Pollution free area.
- Paving roads throughout the township.
- Vastu based campus layout.
- Street lighting in entire campus.
- Underground cabling for electrification & telecommunication.
- Car Parking.
- Centralized water supply.
- Efficient sewage disposal & rain water harvesting.
- Schools, College, Banks, Hospitals & petrol pump etc. in close vicinity.
- **Lift facility with power backup.**
- **Parking +8 Floor first time in Mandideep.**



G+8 Floor

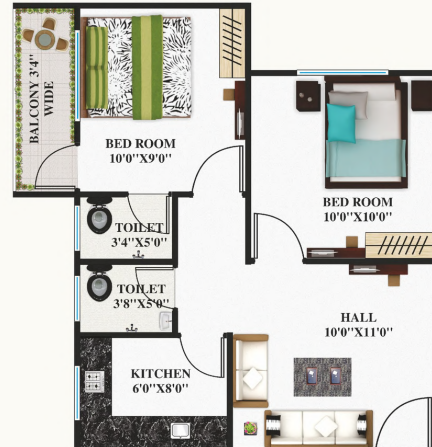


Lotus - 1 BHK Floor plan



Super builtup area - 600 sq.ft.

Tulip - 2 BHK Floor plan



Super builtup area - 800 sq.ft.



Specification

- Structure - R.C.C. Framed structure, designed for earth quake resistance.
- Walls - First Class Brick Masonry.
- Kitchen - Green Marble Platforms & Stainless steel sink, Glazed Ceramic tiles upto 1.5ht above platform.
- Garden - Developed Garden in campus
- Flooring - Ceramic tiles inside, anti skid tiles in Toilet & Wash Area.
- Openings- Door Frames in Dewas Section with factory made flush doors/or best quality MDF doors. Powder coated Aluminum sliding windows / or UPVC windows with iron grill Best quality.
- Toilet - Designer tiles up to 5' ht. matching sanitary tiles, chrome plated good quality fitting.
- Electrification - Concealed wiring with sufficient points with circuit security through M.C.B.'s with provision for inverter.
- Water Supply - Tube well for water supply through sump well.
- Painting - Best quality weather prof exterior paint on external walls, Best quality emulsion \ distemper on internal walls, Oil paint on grills.

All Govt. Permission Approved.
T&CP Approved.
Loan Facility Available.



विशेषताएँ

- मण्डीदीप शहर के बीचों-बीच.
- होशंगाबाद रोड से लगा हुआ
- मण्डीदीप रेल्वे स्टेशन के समीप.

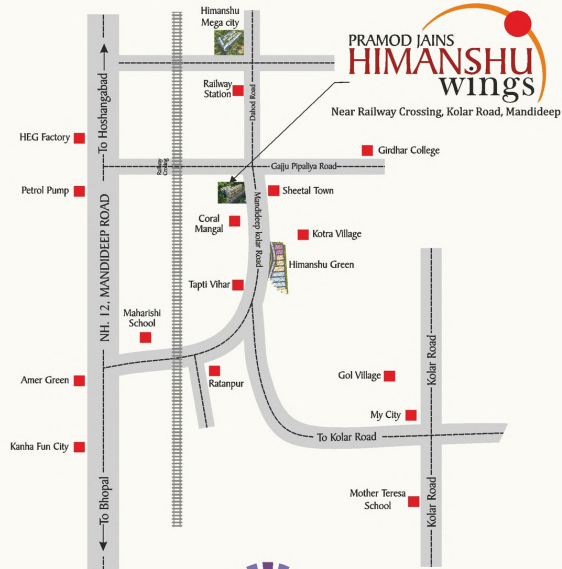
**Trusted Group from last 30 years.
Hurry! Limited Flats available.**

Running Projects

- **Himanshu Greens**, Gram Kotra, Mandideep-Kolar Road, Bhopal
- **Sheetal Tower**, Lalghati, Bhopal
- **Himanshu Mega City**, Mandideep

Coming Projects

- **Himanshu Heights**, Karond, Bhopal



Shri Parasnath
BUILDERS & DEVELOPERS INDIA PVT. LTD.

Corporate Office :

Plot No. 5, IInd Floor, Bank Street,
Zone-II, M.P. Nagar, Bhopal - 462 011
E-mail :- hfmbhopal@yahoo.com

Site Office :

Near Railway Crossing, Kolar Road,
Mandideep

Group Companies

Himanshu Flour Mills Ltd.
Gangotri Cold Storage & ICE Factory Pvt. Ltd.
Gangotri Logistics & Warehousing Pvt. Ltd.

Tel.: 4700410, 4700411

This brochure is purely conceptual & not a legal offering. All visual photographs used in this brochure are artists impressions. All specifications, sizes & layout etc. are tentative & subject to such variations, additions, modifications as decided by the Architects or by the Promoters.



A SYMPHONY OF AFFLUENT LIFESTYLE...

PRAMOD JAINS
HIMANSHU
wings

Near Railway Crossing, Kolar Road, Mandideep

RERA - P-MDD-17-288