

विशेषताएँ

- मण्डीदीप शहर के बीचों-बीच.
- होशंगाबाद रोड से लगा हुआ
- मण्डीदीप रेलवे स्टेशन के समीप.

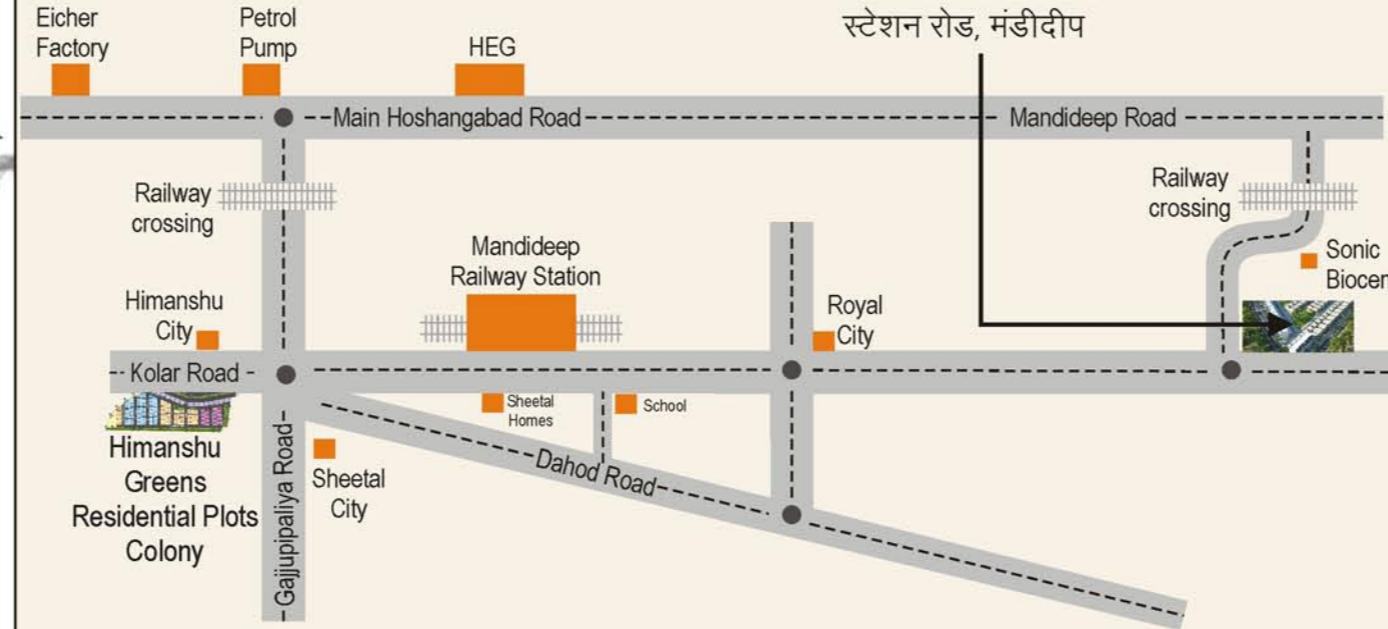
PLOT SIZE

- Flats & Shops
- 4.87 x 10.66 (16' x 35')
- 5.48 x 13.71 (18' x 45')
- 4.87 x 9.14 (16' x 30')



हिमांशु मेगा सिटी

प्रमोद जैन
स्टेशन रोड, मंडीदीप



■ मंडीदीप रेलवे स्टेशन से लगभग 1.5 कि.मी. की दूरी पर।

Trusted Group from last 30 years. | Hurry! Limited Houses available.

Running Projects

- Himanshu Greens, Gram Kotra, Mandideep-Kolar Road, Bhopal
- Himanshu Sheetal Tower, Lalghati, Bhopal
- Himanshu shubh city, Karond Bhopal
- Himanshu wings, Mandideep Bhopal

Coming Projects

- Himanshu Heights, Karond, Bhopal



Shri Parasnath

BUILDERS & DEVELOPERS INDIA PVT. LTD.

Corporate Office : Plot No. 5, IInd Floor, Bank Street, Zone-II, M.P. Nagar, Bhopal - 462 011

E-mail :- hfmbhopal@yahoo.com, website : www.shriparasnathbuilders.com

Site Office : Station Road, Mandideep.

Call : 7722990022

Tel.: 4700410 / 11 / 12 / 13

This brochure is purely conceptual & not a legal offering. All visual photographs used in this brochure are artists impressions. All specifications, sizes & layout etc. are tentative & subject to such variations, additions, modifications as decided by the Architects or by the Promoters.

बेहतर जीवनशैली के साथ
बेहतर सुविधाओं की सौगात...



पूर्ण
शासकीय
अनुमतियाँ
प्राप्त.

लोन
सुविधा
उपलब्ध.

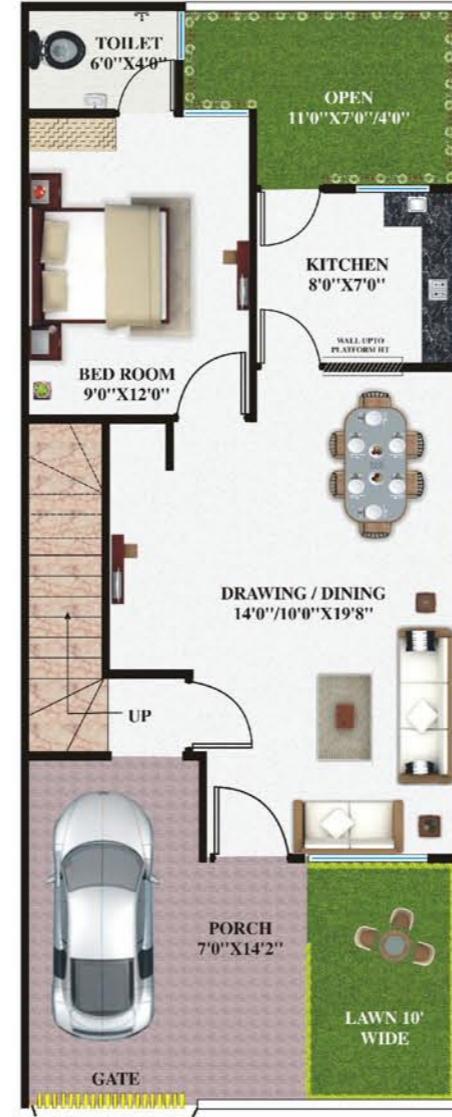
तुरन्त
रजिस्ट्री.

PRAMOD JAINS Himanshu Mega City

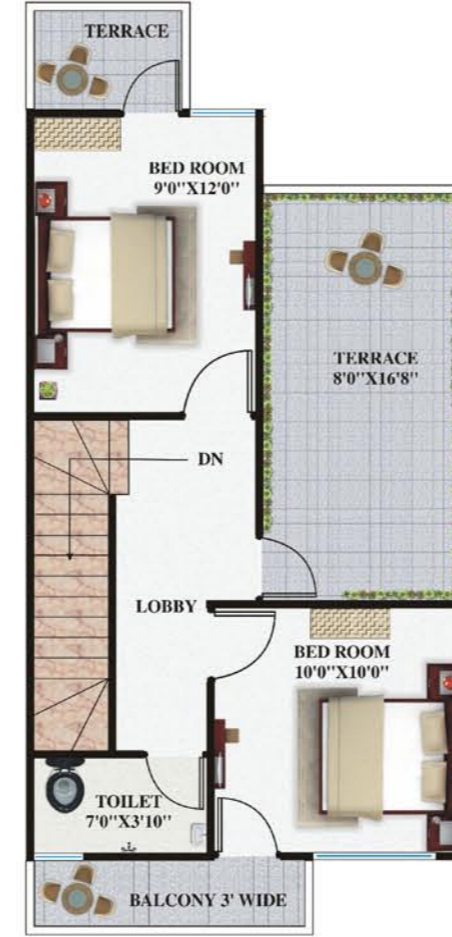
स्टेशन रोड, मंडीदीप
प्लेट, सिंगलेक्स एवं डुप्लेक्स



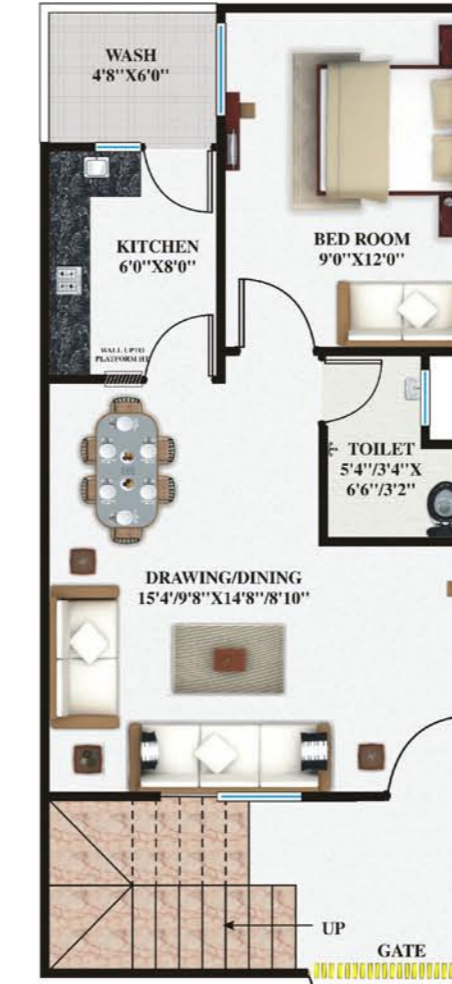
● 3 BHK Duplex



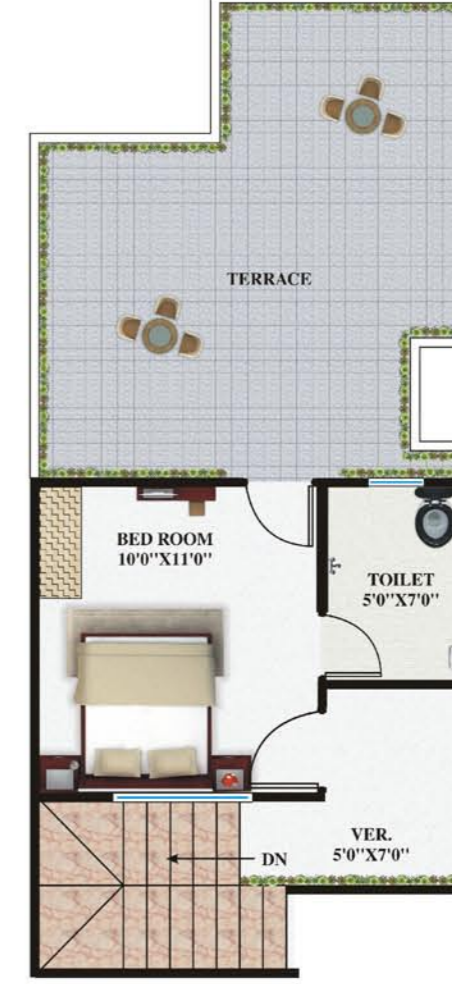
Plot size - 18'0" x 45'0"
Plot area - 810.00 sq.ft.
Super Builtup Area - 1011.00 sq.ft



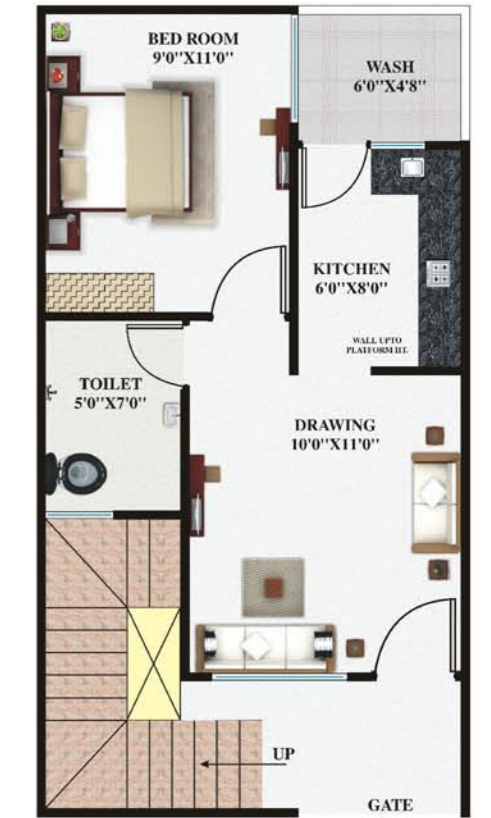
● 2 BHK Duplex



Plot size - 16'0" x 35'0"
Plot area - 560.00 sq.ft.
Super Builtup Area - 724.00 sq.ft



● 1 BHK Singlex



Plot size - 16'0" x 30'0"
Plot area - 480.00 sq.ft.
Super Builtup Area - 480.00 sq.ft

सुविधाएँ एवं विशेषताएँ

प्रमोद जैन
हिमांशु
मेगा सिटी
स्टेशन रोड, मंडीदीप

- भव्य प्रवेश द्वार और कवर्ड केम्पस.
- सभी शासकीय अनुमतियाँ प्राप्त.
- कमरों में प्राकृतिक प्रकाश.
- वास्तु आनुसार लेआउट प्लानिंग.
- 24 घंटे सुरक्षित वातावरण.
- स्ट्रीट लाईट.

- वर्षा जल संचयन और जल निकासी नालियां.
- खुबसूरत बागीचों के साथ बच्चों के खेलने की उत्तम व्यवस्था
- खुला एवं सुरक्षित क्षेत्र.
- पैविंग ब्लॉक चौड़ी सड़कें

Specification

- Structure - R.C.C. Framed structure, designed for earth quake resistance.
- Walls - First Class Brick Masonry.
- Kitchen - Green Marble Platforms & Stainless steel sink, Glazed Ceramic tiles upto 1.5'ht above platform.
- Garden - Developed Garden in campus
- Flooring - Ceramic tiles inside, anti skid tiles in Toilet & Wash Area.
- Toilet - Designer tiles up to 5' ht. matching sanitary tiles, chrome plated good quality fitting.

- Openings- Door Frames in Dewas Section with factory made flush doors/or best quality MDF doors. Powder coated Aluminum sliding windows with iron grill Best quality.
- Electrification - Concealed wiring with sufficient points with circuit security through M.C.B.'s.
- Water Supply - Tube well for water supply through sump well.
- Painting - Best quality weather prof exterior paint on external walls, Best quality emulsion on internal walls, Oil paint on grills.

CALL: 4700410 - 4700413